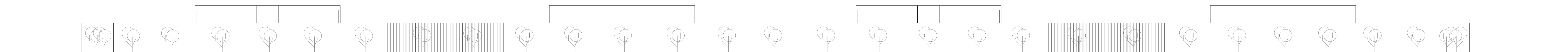
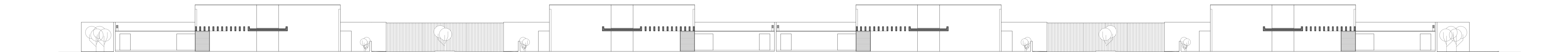


PERFIL RUA DE ACESSO À URBANIZAÇÃO



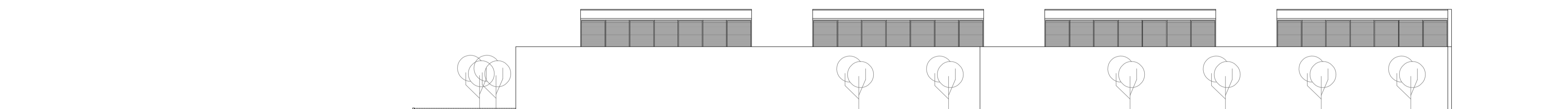
PERFIL AVENIDA DOS HOLANDESES



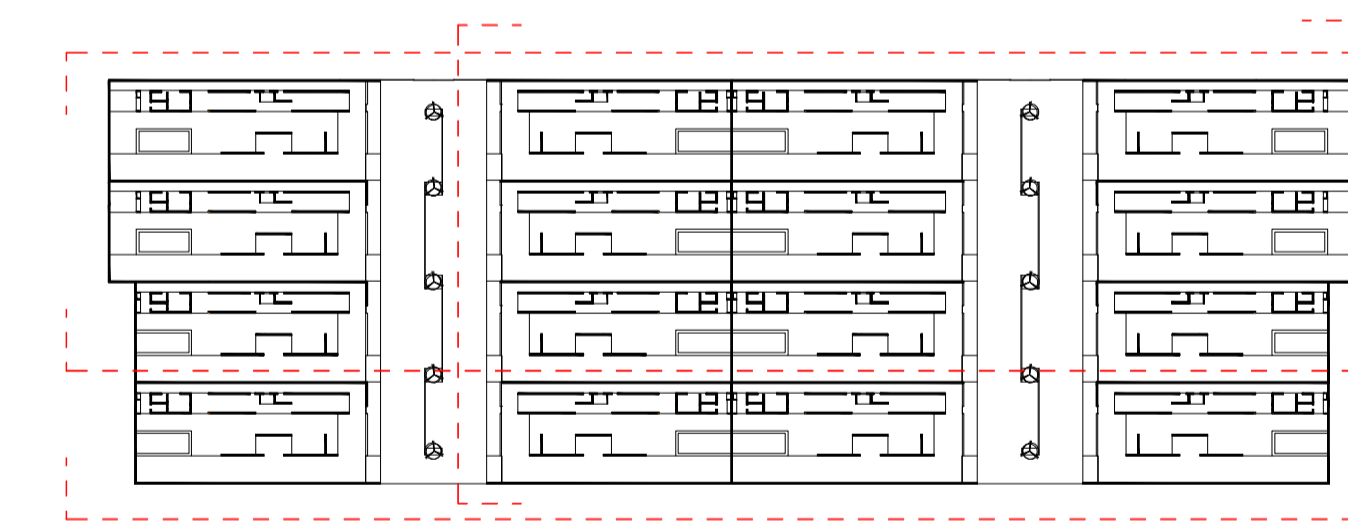
PERFIL LONGITUDINAL INTERNO



PERFIL TRANSVERSAL INTERNO



PERFIL RUA DE ACESSO À PRAIA



Projecto para um conjunto de habitações unifamiliares
São Luís, Maranhão, Brasil

Perfis do conjunto
Escala 1:200
2/11

MICAL PINHEIRO PACHECO
Orientada pelo Arq. JOSÉ GIGANTE